

## HOTEL FAQ



**Congratulations and welcome to Normandy Farm and The Belle!**

We are so excited to have your family share an experience with our family.  
Below are some frequently asked questions regarding reservations, rooms & breakfast:

### HOW CAN I RESERVE A BLOCK OF ROOMS FOR MY WEDDING?

- Our Revenue Manager, Susan Mulville, will be in touch to contract a room block.
- Reservations are then managed by Jeanette Seichepine, our Reservations Assistant.
  - The initial hold secures 25 rooms depending on the event time & package.

### WHAT IS THE PRICE FOR A ROOM? FOR STANDARD ROOMS:

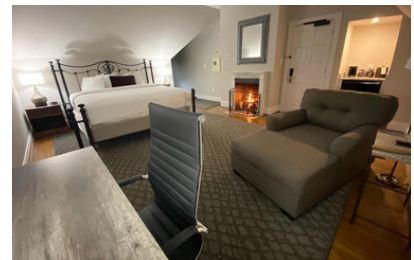
	<u>2024/2025/2026</u>	
	FRI/SAT	SUN
JAN - MAR	\$189	\$179
APR - NOV	\$199	\$189
DEC	\$189	\$179

\* Peak Friday/Saturday rates apply for major holiday dates.

- **\$50** more for upgrades to Guest House suites including East & West Gatehouse, Manor House).
- The Carriage House suites can be reserved at a premium discounted rate. Speak with reservations about pricing on these brand new rooms.
- These upgrades are in addition to the negotiated wedding rate for standard rooms
- Daytime weddings (Saturday or Sunday) will be offered **10 rooms** in the block and the rate will follow the rate guidelines of the night before – i.e., a Sunday daytime wedding in May 2024 will be **\$199** plus tax.
- A **Nightly Resort Fee** is in addition to the hotel room rate. The Resort Fee includes parking, internet, fitness center, indoor pool, Breakfast Buffet (Monday-Saturday) or Grab & Go Breakfast (Sunday)

### WHAT IS THE DIFFERENCE BETWEEN A STANDARD ROOM AND A SUITE?

- We have **113** beautifully appointed hotel rooms located in the main building of the hotel. Interior Standard Rooms: consists of Kings, Double Queens, Handicap Accessible Singles, as well as Bridal Suites.
- We have **40** Farmhouse Suites: The Manor House, East & West Gate Houses were all renovated in 2020. The contemporary Carriage House has been reconstructed from the ground up and held it's grand opening in May 2023. It features **21** hotel suites spanning over 18,268 square feet and 3 stories. Exterior Cottage Suites consist of King Suites and Double Queens. Some suites include pull-out sofas.



### HOW WILL MY GUESTS RESERVE ROOMS IN MY BLOCK?

- After completing a Room Block Request Contract, your block will be active until 60 days ahead of the wedding date.
- Guests can call Normandy Farm Guest Services, at **215-616-8500**
- Guests can book Online via your Group Code, at **NormandyFarm.com**

**MY BLOCK IS FULL. HOW CAN I ADD MORE ROOMS?**

- If guests are experiencing trouble booking or the block is fully reserved, you will reach out to Jeanette Seichepine
- It is the duty of the couple to monitor their block and request updates, Rooming List Requests are issued via email

**WHAT IS YOUR CANCELLATION POLICY?**

For Social Blocks: 7 days Ahead Cancellation Policy: Cancellation fees within (7) days prior to the arrival date equal the cost of first night's room rate + taxes.

**WHAT ARE THE CHECK IN & CHECK OUT TIMES? IS EARLY CHECK IN AVAILABLE?**

- **CHECK IN = 3:00pm CHECK OUT = 11:00am** Every day!
- All guests are welcome to call ahead requesting early check in the morning of arrival.
- **FOR BRIDAL SUITES WE RECOMMEND RESERVING THE NIGHT BEFORE. BASED ON AVAILABILITY.**

**IS BREAKFAST INCLUDED FOR THE GUESTS WHO STAY AT NORMANDY FARM?**

- A complimentary **Hot Buffet Breakfast** is available for guests staying at the hotel, Monday – Saturday. Daily Hotel Breakfast Buffet Hours:
  - Mon – Fri: 7:00AM to 9:00AM, Saturday: 7:30AM to 10:00AM
- Complimentary Grab & Go breakfast is available on Sundays in the lobby: 7:30 - 10:00am
- The Farmer's Daughter Sunday Brunch is not included; reservations required, 9:30am-1:30pm. (Adults) \$46.95per person, (Children) \$20.95 per person

## AMENITIES

113 Beautifully Appointed Hotel Rooms (Main Building)

40 Farmhouse Suites

24 Hour Fitness Center

Indoor Pool & Jacuzzi

Complimentary WiFi

Complimentary Parking

## KEY CONTACTS

Susan Mulville

**REVENUE MANAGER**

Direct Phone: 215-616-8305

Email: [smulville@hansen-properties.com](mailto:smulville@hansen-properties.com)

Jeanette Seichepine

**RESERVATIONS ASSISTANT**

Direct Phone: 215-616-8512

Email: [jseichepine@hansen-properties.com](mailto:jseichepine@hansen-properties.com)

*Normandy Farm*